

the Urban Health Equity Assessment and Response Tool (Urban HEART) for Assessing Cities Health

Equity in developing city health profile تعريف بأداة منظمة الصحة العالمية الخاصة بتقييم التوزيع المنصف للصحة في المدن

د. سمر الفقي

المسئول الإقليمي للمبادرات المجتمعية والمدن الصحية وصحة كبار
المواطنين

منظمة الصحة العالمية- المكتب الإقليمي لشرق المتوسط



دورة إعداد المرسوم الصحي للمدينة

Urban HEART manual



User-friendly guide to identify health inequities

Assessment: an indicator guide

Response: guide to best practices

Target audiences

Mayors, local stakeholders

Local & National Gov.

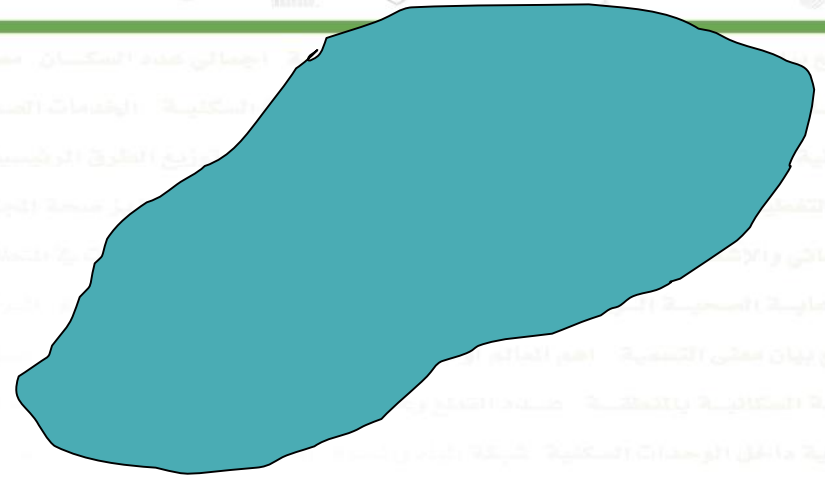




A single city health profile

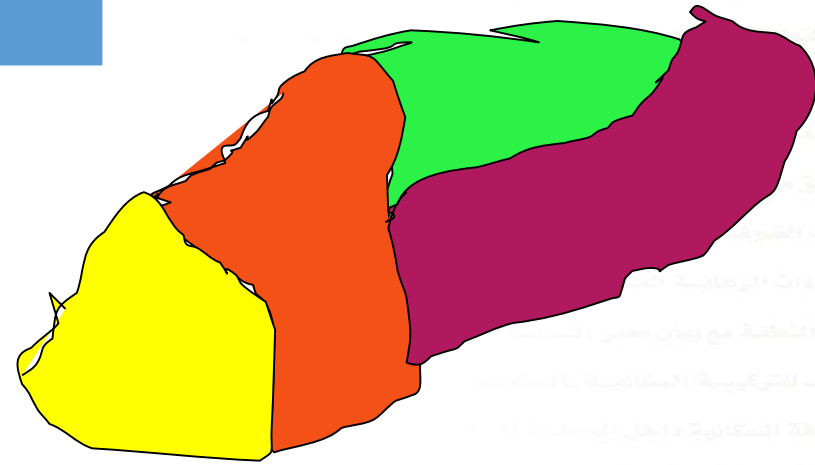
City- wide data on different categories of information.

City-wide analysis and



City areas profiles (information about different parts of the city)

Data on different categories of information from different parts of the city (possibility of comparison)



Urban HEART: Implementation Steps

- **Step 1:** build an inclusive team

Assessment Part

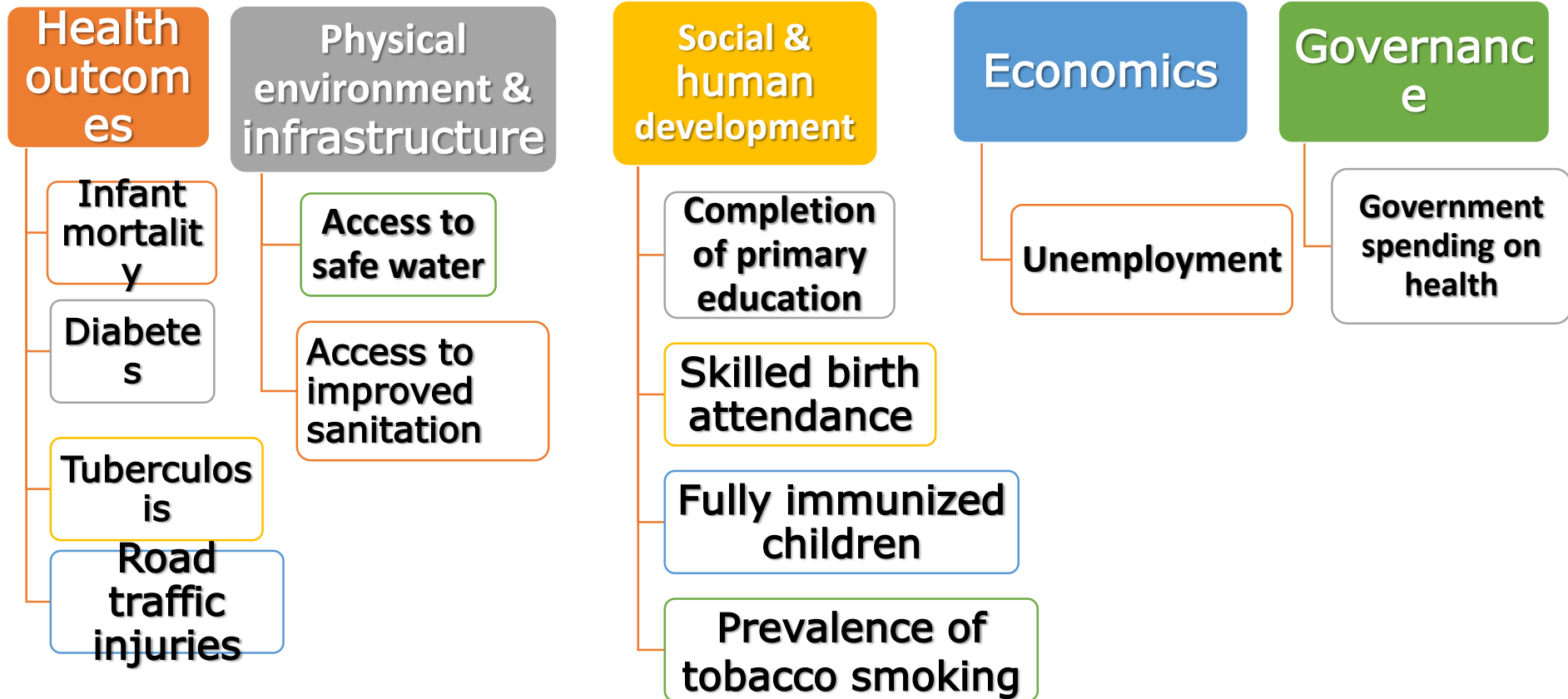
- **Step 2:** Define set of indicators (definition & sources) and benchmarks (internal or External) fit with your city status and capacity
- **Step 3:** Assemble relevant and valid data (available and valid datasets/ desk review) identify challenges!!

Reponses Part

- **Step 4:** Generate evidence
- **Step 5:** Assess and prioritize health [equity gaps](#) and gradients
- **Step 6:** Identify the best response based on defined criteria



Step 2: Setting Core indicators and Benchmarks



Examples of Urban HEART findings

UH in Sale of Morocco

Indicators	Médina	Grand Sidi Moussa	Said Hajji Resettled	Said Hajji Area 14
Incidence of Tuberculosis (per 100 000)	197	170	NA	72
Health insurance coverage rate	18,6%	7,9%	52,4%	65,1%

UH in Ariana of Tunisia

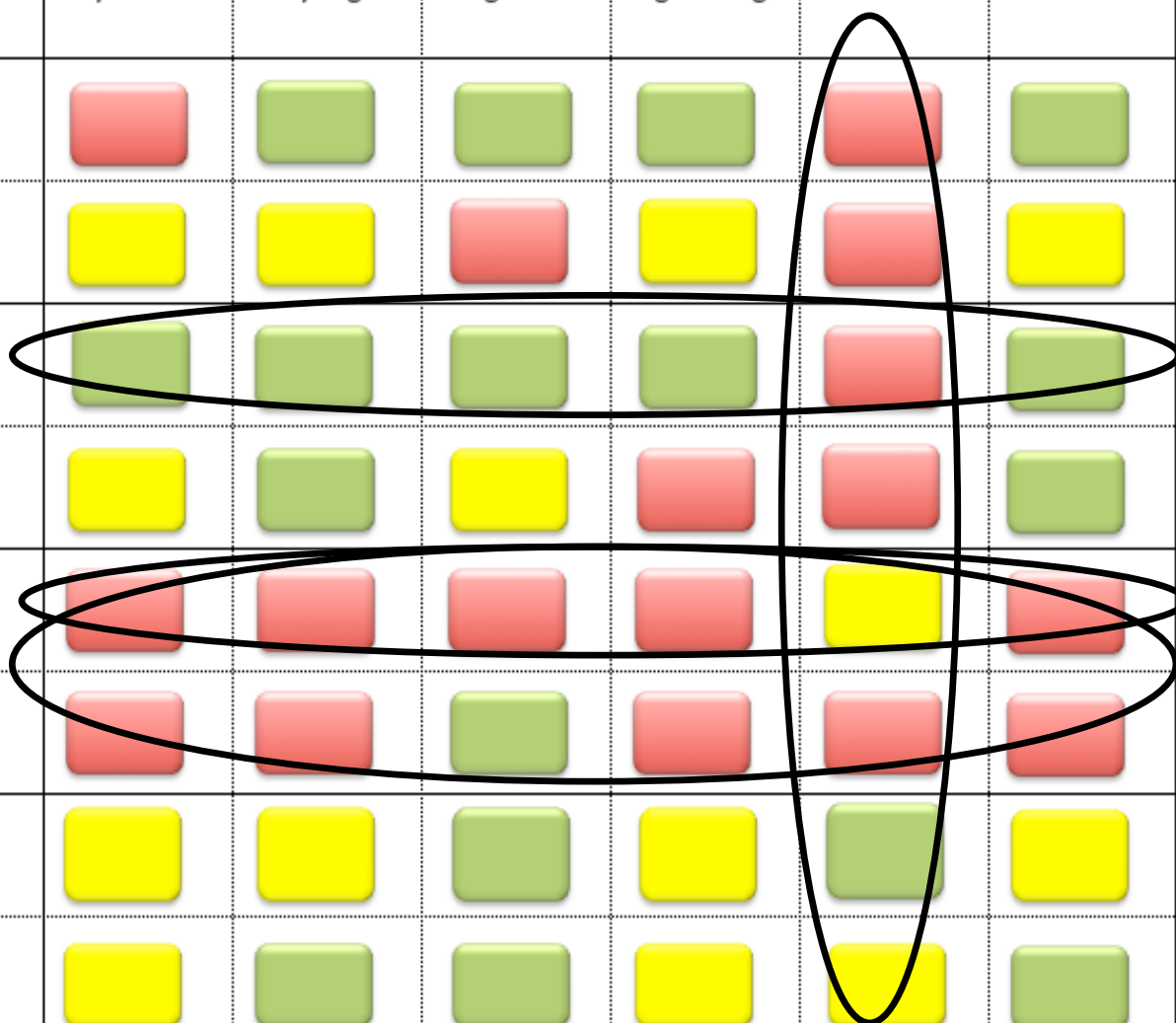
Indicators	Ariana Ville	Ariana Superior	Ennasr City	El Manazeh
Hypertension	42,0	38,1	23,0	36,1
Higher Risk factors of CVD	73,5	73,8	55,6	64,4
<5 mortality rate	19,6	19,1	12,7	11,7

UH in Gezirt El Warak of Egypt

Core Indicator	Gezerit El Warak	National Level
Female Hypertension >= 140/90	14.5%	12.8%
Access of the households to drainage public sewers	0.0	56.0%

Step 5: Assess and prioritize health equity gaps

ULAANBAATAR		Bayanzurkh	Bayangol	Baganuur	Bagakhangai	Nalaikh	Sukhbaatar
PHYSICAL ENVIRONMENT & INFRASTRUCTURE	Safe water	Red	Green	Green	Green	Red	Green
	Road traffic accidents	Yellow	Yellow	Red	Yellow	Red	Yellow
SOCIAL AND HUMAN DEVELOPMENT	Literacy rate	Green	Green	Green	Green	Red	Green
	Underweight children	Yellow	Green	Yellow	Red	Red	Green
ECONOMICS	Unemployment rate	Red	Red	Red	Red	Yellow	Red
	Access to credit	Red	Red	Green	Red	Red	Red
GOVERNANCE	Health spending	Yellow	Yellow	Green	Yellow	Green	Yellow
	Insurance coverage	Yellow	Green	Green	Yellow	Yellow	Green



Key discussion points

- What are the main **Equity data needed**, considering local overall situation?
- What are the **available** equity data?
- What are **missing** information?
- What are the potential **sources of information**?
- Who is **responsible** for collecting and reporting missing information?



Health Domain

Indicator	Availability		Source of information	Responsible party
	Yes	No		
Infant mortality rate				
Under 5 mortality rate per 1000 live births				
Maternal mortality ratio per 100,000 live births				
Diabetes prevalence rates per 100 000 population				
Proportion of tuberculosis cases detected and cured under directly observed treatment, short course (DOTS)				
Prevalence of tuberculosis				
Road traffic death rate				

Social and Human Development Dom

Indicator	Availability		Source/ potential	Responsibility
	Yes	No		
Completion of primary education in % in the age group above 15				
Proportion of births attended by skilled health personnel				
Percentage of fully immunized children under one year				
Percentage of population who currently smoke cigarettes and other forms of tobacco products				
Prevalence of underweight children under five years of age				
Prevalence of overweight and obesity in the population				

Physical environment and infrastructure Domain

Indicator	Availability		Source/ potential	Responsibility
	Yes	No		
Percentage of population with sustainable access to an improved water source				
Percentage of population with access to improved sanitation				
Percentage of households served by municipal solid waste management system				
Proportion of land area covered by green spaces (including parks playing fields, other open spaces)				
Proportion of urban population living in slum				



Economic Domain

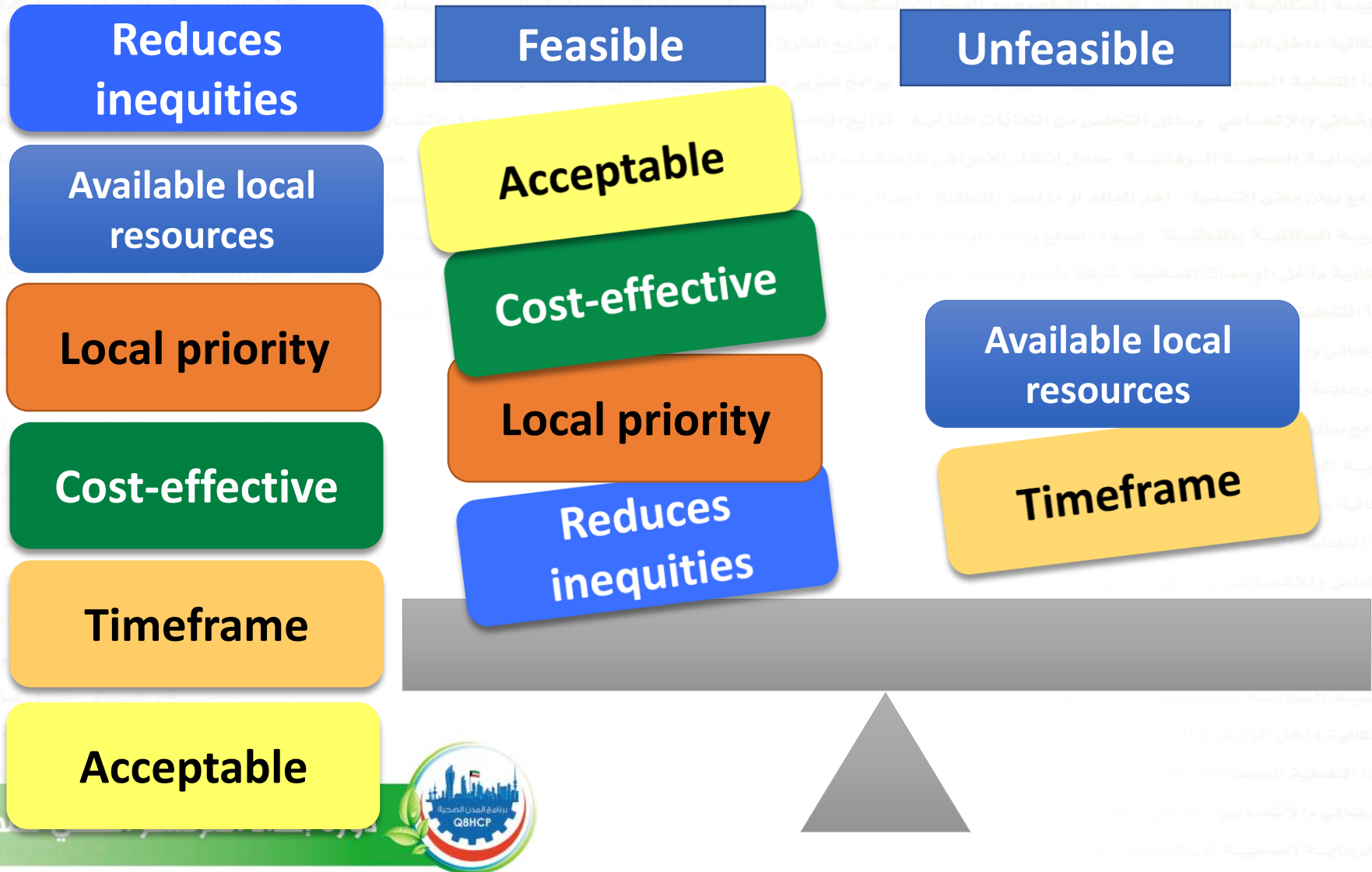
Indicator	Availability		Source/ potential	Responsibility
	Yes	No		
Percentage of population living below the nationally determined poverty line				
Percentage of adult population who are currently unemployed				
Participation of women in the workforce, expressed as a percentage				



Governance

Indicator	Availability		Source/ potential	Responsibility
	Yes	No		
Percentage of population covered by any insurance				
Percentage of local government spending allocated to health				
Percentage of local government budget allocated to education				
Proportion of budget spent on social services such as disability pensions, supporting people with				

Step 6: Identify the best response based on defined criteria





THANK YOU

